

## Handles, Spindles and Accessories

A flexible solution makes it possible to combine TrioVing and VingCard handles with all kinds of round roses and long escutcheons and for all the 50- and 53-Series lock cases.

Due to the slanted milling of the spindle, screws are secured against vibrations and the fastening of the escutcheon remains strong.

### Operation:

- the square spindle moves freely inside the handle
- the handle is fastened to the door by means of through fixing screws

### Parts and Screws:

- plastic washer for 16 mm handle neck
- lining for 8 mm handle spindle makes it possible to use it in locks with 9 mm handle hub

### Dimensions:

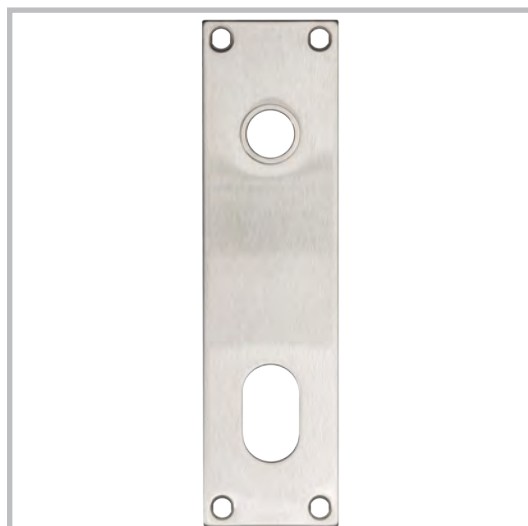
- an 8 mm square spindle is standard for all TrioVing and VingCard handles
- available in yellow chromate steel
- a stainless steel square spindle is standard for all marine locks
- spindle available in 3 lengths:
  1. 89 mm for door thickness 34-52 mm
  2. 107 mm for door thickness 50-70 mm
  3. 125 mm for door thickness 68-88 mm
- when using a spacer plate the door thickness area must be adjusted

### Delivery:

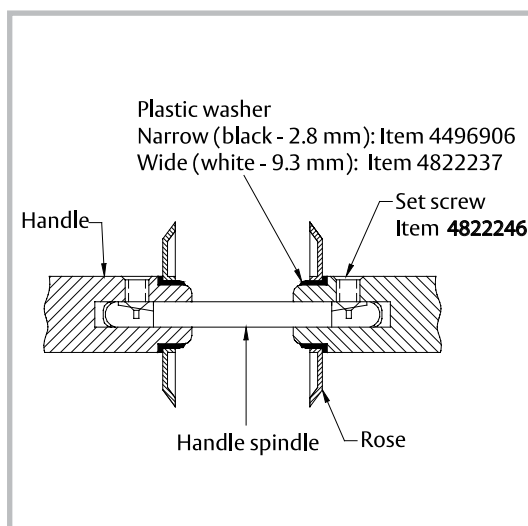
- the door thickness must be specified in order that the correct screw lengths are supplied
- if the door thickness is not specified, then we deliver for the standard door thickness 36-44 mm
- doors with stainless steel escutcheons must have minimum door thickness 38 mm



Handle 7363-S/8



Long escutcheon 7715



Handle fastener - adjustable spindle

## Door Handles

### TO ORDER you must specify:

- handle number
- finish, i.e. satin chrome, polished chrome, satin brass or polished brass
- door thickness

### Application:

- for all interior and exterior doors

### Operation:

- suitable for all TrioVing lock cases in the 50- and 53-Series

### Finish:

- satin chrome
- satin brass
- polished chrome
- polished brass

### Delivery:

- delivered in pairs
- stainless steel handle spindle
- includes fastening screws and nylon washers
- a sleeve lining is included so that the handle may be used with 9 mm hub lock cases
- round roses and long escutcheons to be ordered separately

### Weight:

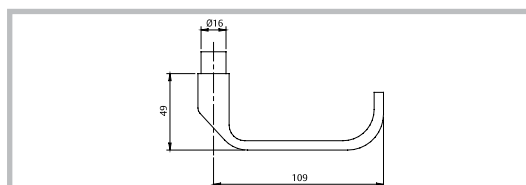
- 7363-S/8, pair = 500 g
- 7360-S/8, pair = 700 g
- Functional Euro, pair = 503 g
- Straight, pair = 571 g

In addition to the standard brass door handles shown, the Marine Division also supply handles specially designed for our card operated locks, i.e. the Flair, Functional Ansi (NB: Functional Euro can also be used with the 77-Series Long escutcheons), Straight and Wing.

More handle choices are available upon request.



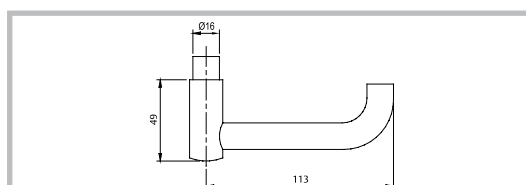
Handle 7363-S/8



7363-S/8: Technical drawing



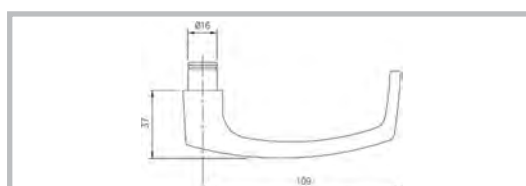
Handle 7360-S/8



7360-S/8: Technical drawing



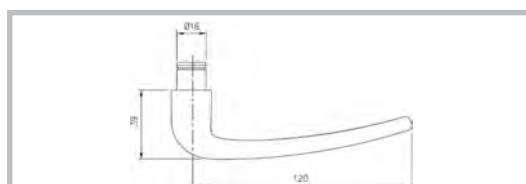
Handle Functional Euro



Functional Euro: Technical drawing



Handle Straight



Straight: Technical drawing

## Long Escutcheons for the 53-Series

### TO ORDER you must specify:

- escutcheon number
- finish, i.e. satin chrome, polished chrome, satin brass or polished brass
- door thickness

### Application:

- for doors equipped with 53-Series' cylinder lock cases

### Operation:

- suitable for doors requiring a handle only, a handle and cylinder or a handle and indicator
- 7712 used with cylinder lock case with dead bolt 5341/8 and dead latch lock case 5332/8
- 7713 for interconnecting doors - delivered in pieces only
- 7714 used with mortice lock case 5336/8
- 7715 used with cylinder lock cases 5312/8, 5316/8, 5320/8 and 5382/8, combined with the 5520/32 cylinder
- 7718 used with bathroom door lock case 5316/8

### Finish:

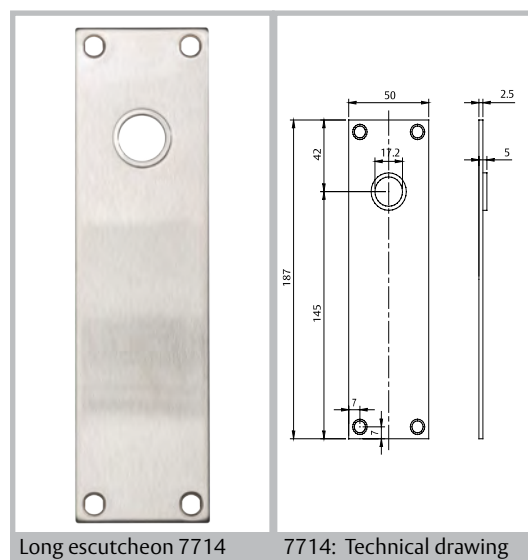
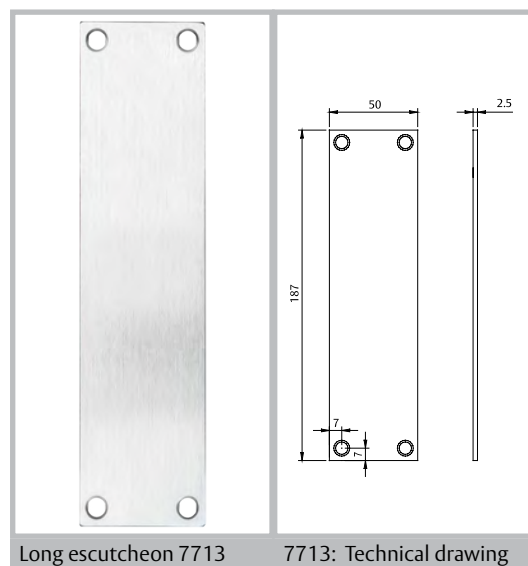
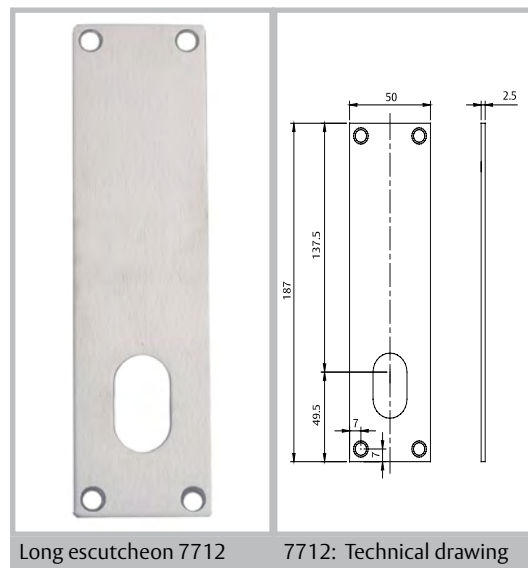
- satin chrome
- satin brass
- polished chrome
- polished brass

### Delivery:

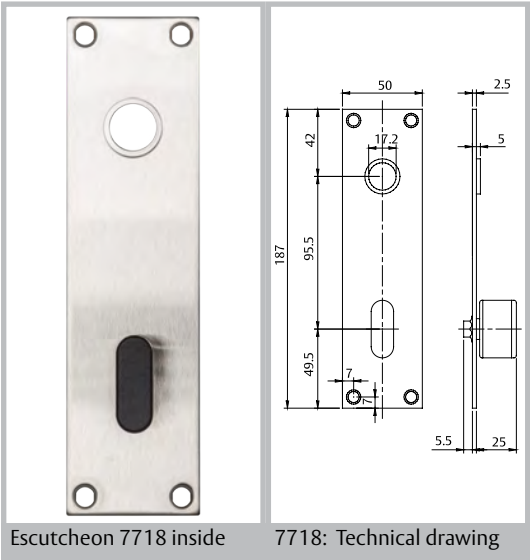
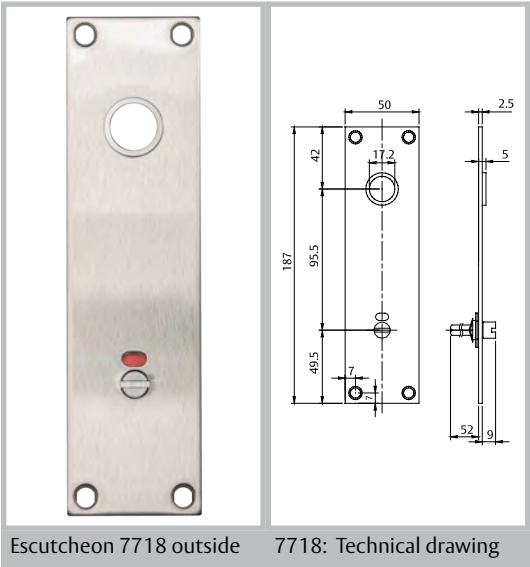
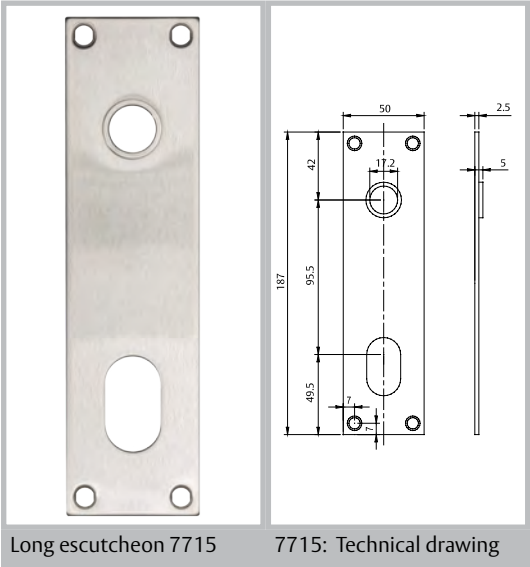
- delivered in pairs with screws and nuts
- door thickness must be specified

### Weight:

- 7712, pair = 430 g
- 7713, piece = 215 g
- 7714, pair = 400 g
- 7715, pair = 400 g
- 7718, pair = 470 g



Long Escutcheons for the 53-Series



## Stainless Steel Door Handle 8605

### TO ORDER you must specify:

- handle number
- door thickness

### Application:

- for heavy duty fire doors which require a stainless steel handle

### Operation:

- suitable for all VingCard 53-Series stainless steel lock cases
- used in co-ordination with stainless steel long escutcheons 8660, 8662 and 8664 and handle rose 8621

### Finish:

- stainless steel

### Delivery:

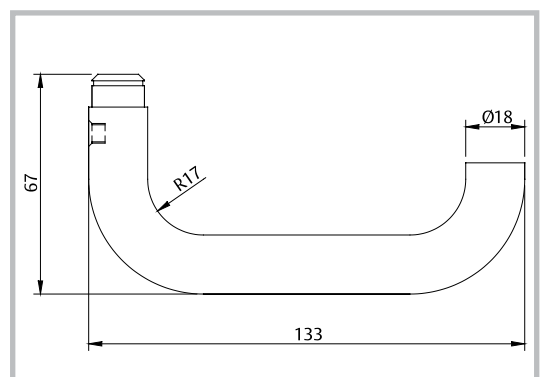
- must be specially ordered
- delivered in pairs

### Weight:

- 260 g, pair



Handle 8605



8605: Technical drawing

## Stainless Steel Handle Rose 8621

### TO ORDER you must specify:

- handle rose number
- door thickness

### Operation:

- for use with Handle 8605

### Finish:

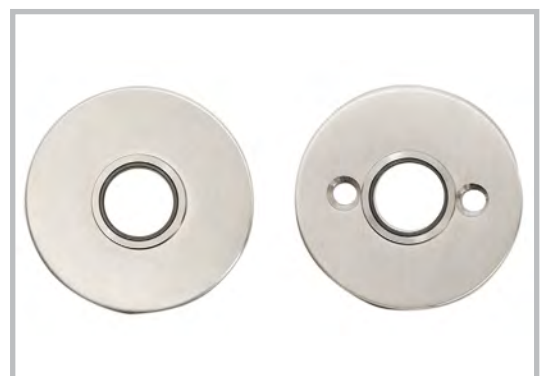
- stainless steel

### Delivery:

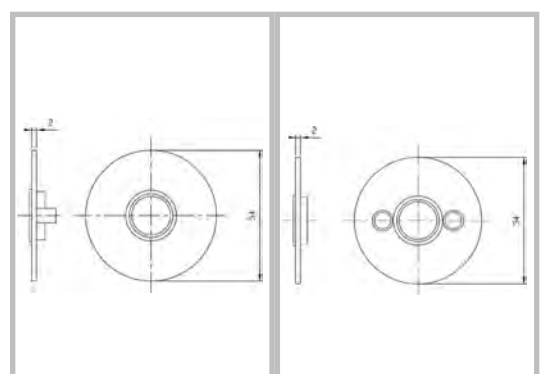
- must be specially ordered
- delivered in pairs

### Weight:

- 66 g, pair



Handle rose 8621



8621: Technical drawing

## Long Escutcheons for the 53-Series

### TO ORDER you must specify:

- escutcheon number
- door thickness

### Application:

- for heavy duty fire doors equipped with 53-Series lock cases
- only to be used with Handle 8605

### Operation:

- suitable for doors requiring a handle only, a handle and cylinder or a handle and indicator
- 8660 used with lock cases 5312/8, 5316/8, 5320/8 and 5382/8, combined with cylinders in the 5520-Series
- 8661 used with cylinder lock case 5341/8
- 8662 used with mortice lock case 5336/8
- 8664 used with bathroom lock case 5316/8

### Finish:

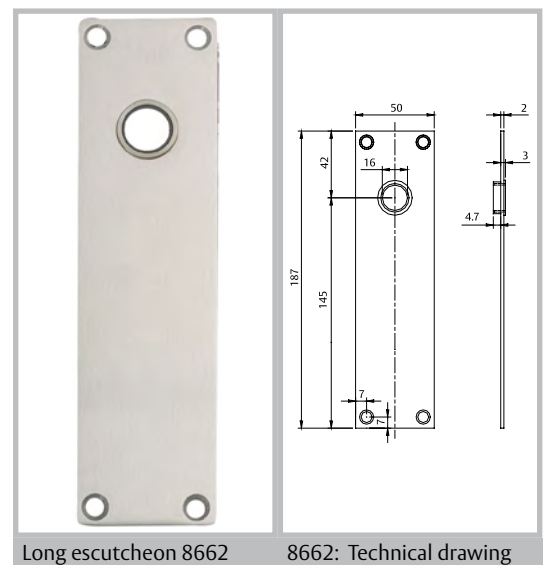
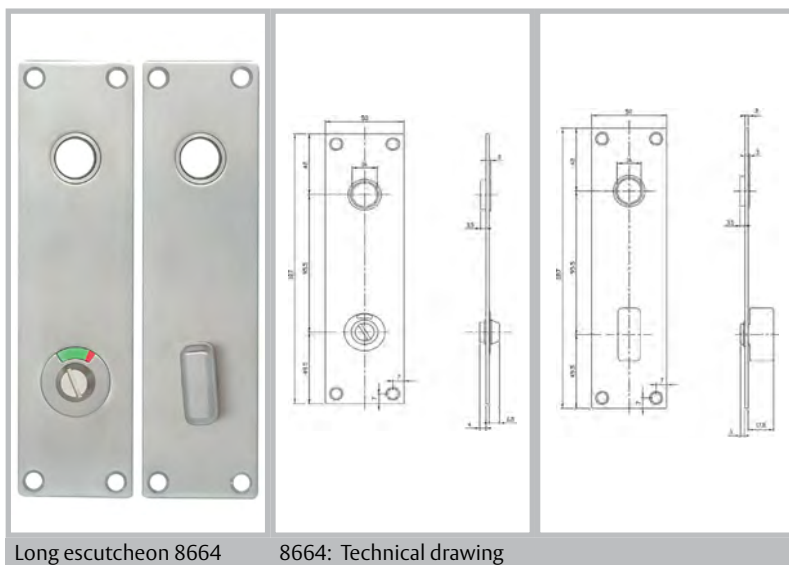
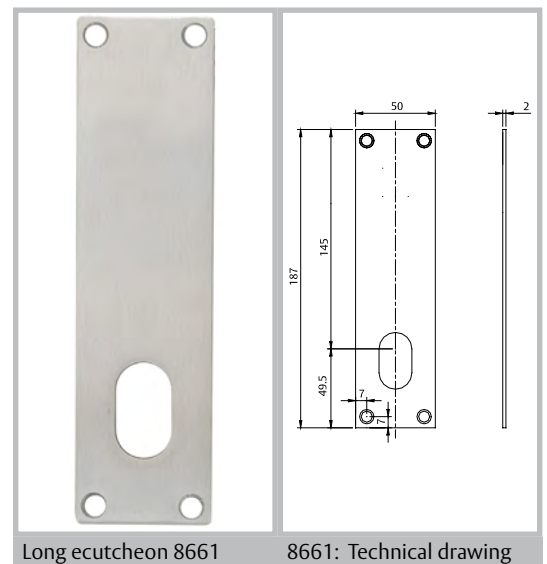
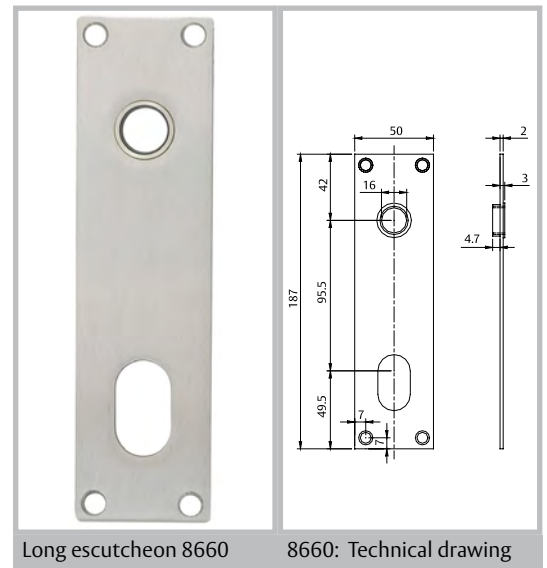
- stainless steel

### Delivery:

- delivered in pairs with screws and nuts
- door thickness must be specified
- minimum door thickness 38 mm

### Weight:

- 8660, pair = 280 g
- 8661, pair = 280 g
- 8662, pair = 300 g
- 8664, pair = 380 g



## Long Escutcheons for the 50-Series

### TO ORDER you must specify:

- escutcheon number
- door thickness

### Application:

- for narrow profile doors equipped with 50-Series' cylinder lock cases

### Operation:

- suitable for doors requiring a handle only or a handle and cylinder
- SK6485/SK6486 used with cylinder lock cases 5018, 5032 and 5049
- SK6487/SK6488 used with cylinder lock cases 5016, combined with the 5520/32 cylinder

### Finish:

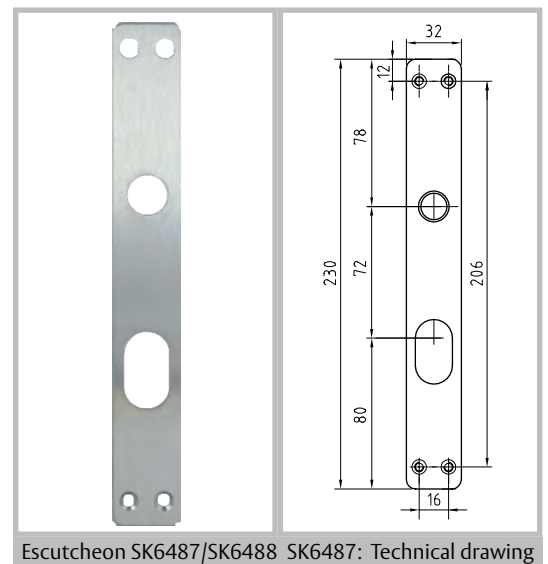
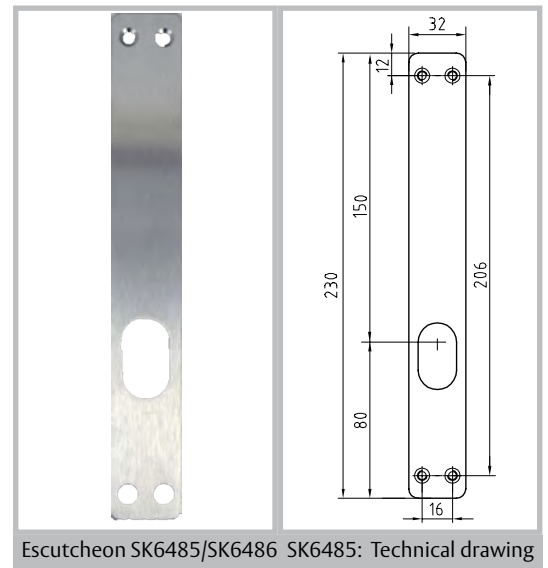
- stainless steel

### Delivery:

- 4 escutcheon screws, M5 x 75 mm, are included with both a single escutcheon or a pair of escutcheons

### Weight:

- SK6485 = 150 g
- SK6487 = 150 g



## Cylinder and Indicator Roses

### Cylinder Rose 5968

**TO ORDER you must specify:**

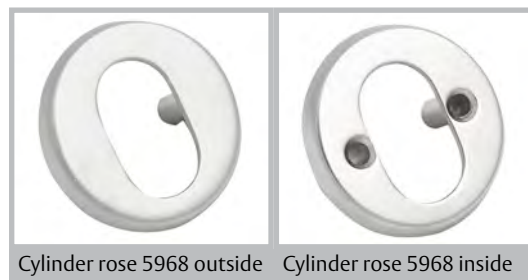
- cylinder rose number
- finish, i.e. satin chrome, polished chrome or satin brass
- height, i.e. 6, 9, 12, 15, 18 or 21 mm
- specify inside or outside rose
- door thickness
- rose screws must be ordered separately

**Application:**

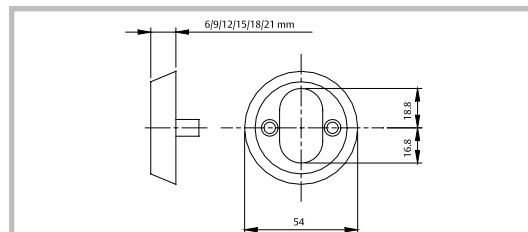
- suitable for all Assa/Ruko cylinder lock cases
- used in combination with cylinder 5537

**Material and Weight:**

- brass
- 43 - 80 g, piece, depending on height



Cylinder rose 5968 outside    Cylinder rose 5968 inside



5968: Technical drawing

### Cylinder Rose 5965

**TO ORDER you must specify:**

- cylinder rose number
- finish, i.e. satin chrome or polished chrome
- height, i.e. 8 or 14 mm or 8 mm blind rose
- specify inside or outside rose
- door thickness
- rose screws must be ordered separately

**Application:**

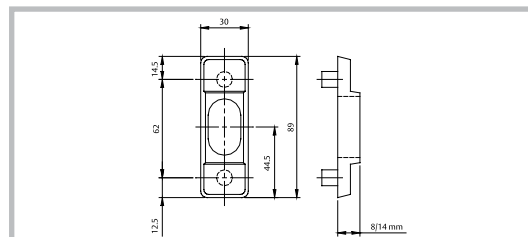
- suitable for TrioVing narrow profile cylinder lock cases: 5016, 5018, 5032 and 5049
- used in combination with cylinders 5520 and 5537

**Material, Finish and Weight:**

- zinc
- satin chrome and polished chrome only
- 8 mm = 67 g and 14 mm = 95 g



Cylinder rose 5965



5965: Technical drawing

### Cylinder Rose 2501

**TO ORDER you must specify:**

- cylinder rose number
- finish, i.e. satin chrome or satin brass
- height, i.e. 4.5 or 7.5 mm
- specify inside or outside rose
- door thickness
- rose screws must be ordered separately

**Application:**

- suitable for TrioVing cylinders 5506, 5511 and 5511C

**Material and Weight:**

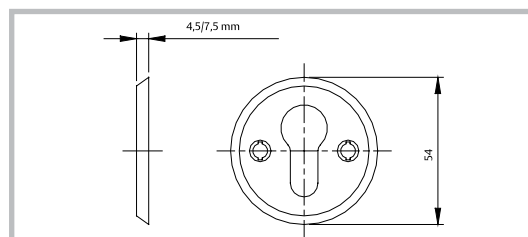
- brass
- 4.5 mm = 255 g and 7.5 mm = 325 g

**Delivery:**

- rose screws are included with Cylinder rose set but must be ordered separately for single roses



Cylinder rose 2501



2501: Technical drawing



## Cylinder and Indicator Roses

### Indicator Rose 7562

**TO ORDER you must specify:**

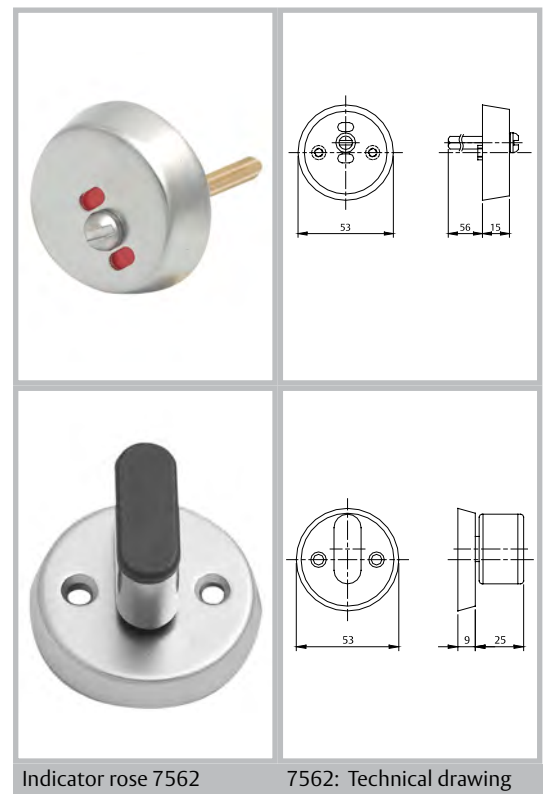
- indicator rose number
- finish, i.e. satin chrome, polished chrome, satin brass or polished brass
- door thickness

**Application:**

- suitable for Lock case 5316/8
- used in combination with door handle and handle rose

**Material, Finish and Weight:**

- brass
- indicator = 198 g and thumb turn = 200 g



### Cylinder Coat 5967

**TO ORDER you must specify:**

- cylinder coat number
- height, i.e. 6 or 10 mm
- specify inside or outside rose
- door thickness
- rose screws must be ordered separately

**Application:**

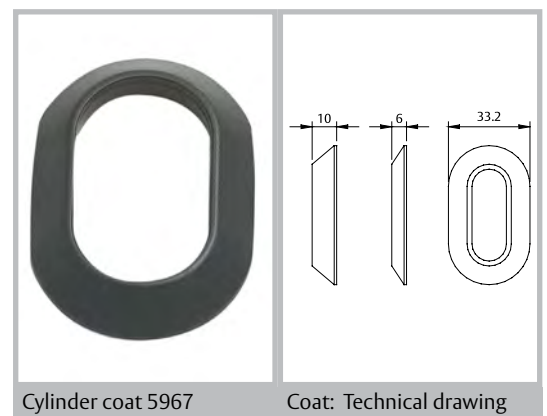
- used with long escutcheons in the 76- and 77-Series to reduce the visible part of the cylinder
- the spacer plate must be used on doors with door thickness less than 34 mm
- when placing a spacer plate on each side of the door the door thickness increases by 14 mm

**Material and Weight:**

- black polycarbonate
- 4 g, piece

**Delivery:**

- delivered separately



## Handle and Blind Roses

### Handle Rose 7509

**TO ORDER** you must specify:

- handle rose number
- finish, i.e. satin chrome, polished chrome, satin brass or polished brass

**Application:**

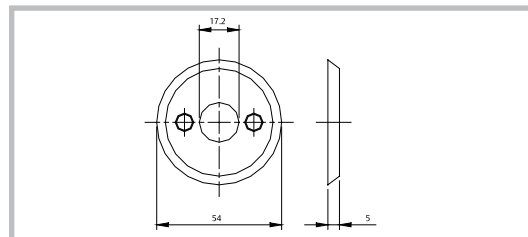
- suitable for all TrioVing lock cases
- the handle rose is adjustable for all TrioVing door handles in brass with an adjustable spindle

**Material and Weight:**

- brass
- 100 g, pair



Handle rose 7509



7509: Technical drawing

### Blind Rose 5966

**TO ORDER** you must specify:

- blind rose number
- finish, i.e. satin chrome, polished chrome, satin brass or polished brass
- inside, outside or pair

**Application:**

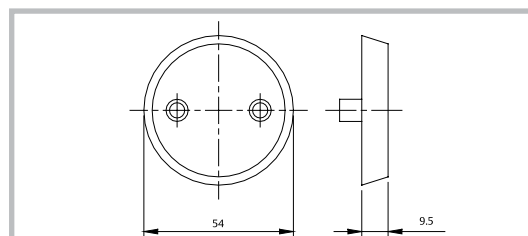
- suitable for all TrioVing lock cases
- used to cover old cylinder or handle holes

**Material and Weight:**

- brass
- 140 g, pair



Blind rose 5966



5966: Technical drawing

### Handle Rose 8640

**TO ORDER** you must specify:

- handle rose number
- finish, i.e. satin chrome, polished chrome or satin brass

**Application:**

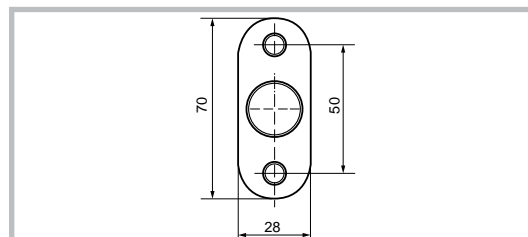
- suitable for TrioVing narrow profile lock case 5016

**Material and Weight:**

- stainless steel
- 65 g, pair



Handle rose 8640



8640: Technical drawing

## Spacer Plate 7695

### TO ORDER you must specify:

- spacer plate number

### Application:

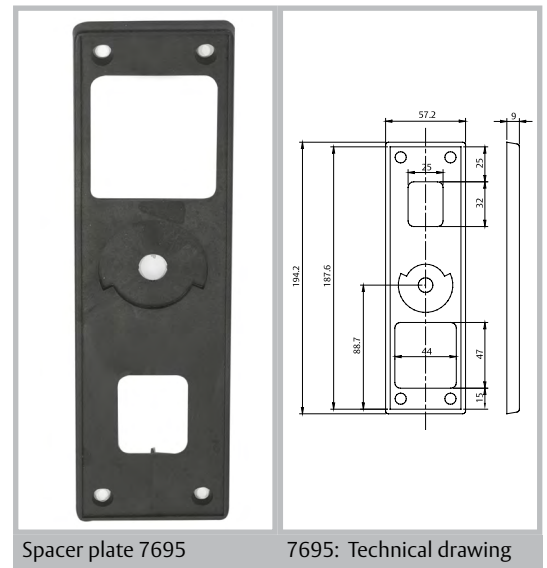
- used with long escutcheons in the 76- and 77-Series to reduce the visible part of the cylinder
- the spacer plate must be used on doors with door thickness less than 34 mm
- when placing a spacer plate on each side of the door the door thickness increases by 14 mm

### Material, Finish and Weight:

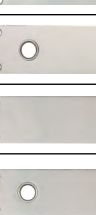

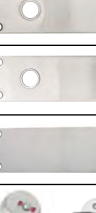




- black polycarbonate
- 30 g, piece

### Delivery:










- delivered separately



# Application Table for 53-Series Stainless Steel Lock cases

	Cylinders and Thumb Turn					Roses					Long Escutcheons and Handles					Long Escutcheons and Handles, stainless steel					Optional		Electric Striker Plate
	S-5525	S-5525C	5520	5520C	5541	7509	5968	7562	7712	7714	7715	7718	7363-S/8 7360-S/8	8660	8661	8662	8664	8605	7695	5967			Solid 60
Fittings/ Lock cases																							Solid 60
5312/8	✓	✓	✓	✓	✓	✓	✓	-	-	-	✓	-	✓	✓	-	-	-	✓	✓	✓			-
5312/8/ 5390	✓	✓	-	-	-	✓	✓	-	-	-	-	-	✓	-	-	-	-	✓	-	-			-
5316/8	✓	✓	✓	✓	✓	✓	✓	-	-	-	✓	-	✓	✓	-	-	-	✓	✓	✓			-
5316/8 Bathroom	-	-	-	-	-	✓	-	✓	-	-	-	✓	✓	-	-	-	✓	✓	✓	-			-
5320/8	✓	✓	✓	✓	✓	✓	✓	-	-	-	✓	-	✓	✓	-	-	-	✓	✓	✓			-
5322	✓	✓	✓	✓	✓	✓	-	-	-	-	✓	-	✓	✓	-	-	-	✓	✓	✓			✓
5332/8	✓	✓	✓	✓	✓	-	✓	-	✓	-	-	-	-	-	✓	-	-	-	✓	✓			✓
5336/8	-	-	-	-	-	✓	-	-	-	✓	-	-	✓	-	-	✓	-	✓	✓	-			-
5341/8	✓	✓	✓	✓	✓	-	✓	-	✓	-	-	-	-	-	✓	-	-	-	✓	✓			-
5341/8/ 5390	✓	✓	-	-	-	-	✓	-	-	-	-	-	-	-	-	-	-	-	-	-			-
5382/8	✓	✓	✓	✓	✓	✓	✓	-	-	-	✓	-	✓	✓	-	-	-	✓	✓	✓			-

## Application Table for 50-Series Lock cases

	Cylinders and Thumb turn						Roses		Long Escutcheons and Handles			Electric Striker Plate
Fittings/ Lock cases	S-5527	S-5527C	5520	5541	5520C	8640	5965	SK6485/ SK6486	SK6487/ SK6488	7363-S/8 7360-S/8	Solid 60	
												
5016	✓	✓	✓	✓	✓	✓	✓	-	✓	✓	-	
5018	✓	✓	✓	✓	✓	-	✓	✓	-	-	-	
5032	✓	✓	✓	✓	✓	-	✓	✓	-	-	✓	
5049	✓	✓	✓	✓	✓	-	✓	✓	-	-	-	