

Mechanical Locks

53-Series Lock Cases



Lock case 5312/8



Lock case 5316/8



Lock case 5320/8



Lock case 5322/8



Lock case 5332/8



Lock case 5336/8



Lock case 5341/8



Lock case 5382/8

Lock case 5312/8 - Cylinder Lock case for Heavy-Duty Doors



TO ORDER you must specify:

- lock case number
- direction of opening, i.e. right or left
- single pack or industrial pack of 20 pcs

Application:

- meets all fire class requirements
- suitable for corrosive environments
- suitable for heavy exterior and interior doors
- reinforced latch bolt
- dead bolt

Operation:

- reinforced latch bolt operated by handles
- dead bolt operated by key or thumb turn
- double cylinder can be fitted

Materials and Finish:

- lock case - stainless steel
- striker plate - stainless steel
- handle hub and latch bolt - stainless steel
- 8 mm handle hub
- weighs 602 g

Delivery:

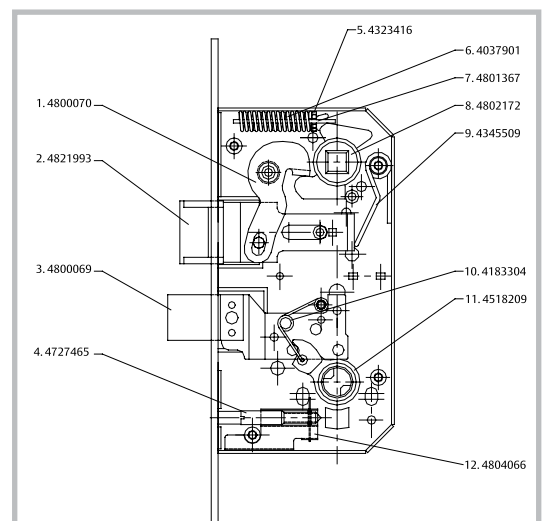
- lock case only
- striker plate is optional
- accessories must be ordered separately

Spare Parts:

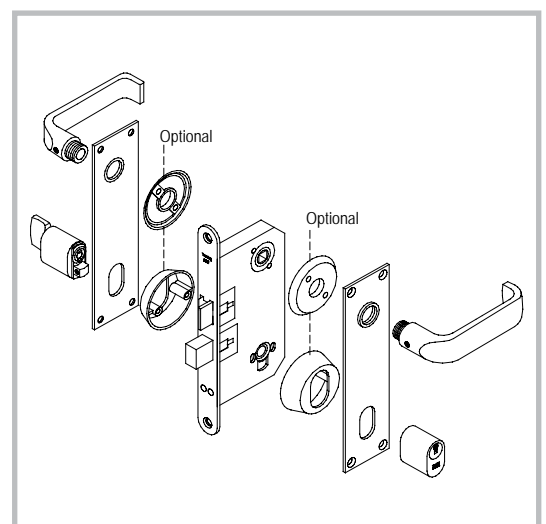
1. Latch bolt retracting arm
2. Latch bolt
3. Dead bolt
4. Cylinder fixing screw
5. Pin spring
6. Handle hub spring
7. Spring guide
8. Handle hub 8 mm
9. Latch bolt spring
10. Cylinder hub spring
11. Cylinder hub
12. Screw guide



Lock case 5312/8



Exploded view of available spare parts



Lock case with available accessories

Lock case 5312/8/5390 - Surface Mounted Cylinder Lock case



TO ORDER you must specify:

- lock case number
- direction of opening, i.e. right or left

Application:

- meets all fire class requirements
- suitable for corrosive environments
- suitable for heavy, steel doors
- surface mounted
- reinforced latch bolt
- dead bolt

Operation:

- reinforced latch bolt operated by handles
- dead bolt operated by key or thumb turn
- double cylinder can be fitted

Materials and Finish:

- lock case and external lock casing - stainless steel
- striker plate - stainless steel
- handle hub and latch bolt - stainless steel
- 8 mm handle hub
- weighs 1.374 kg

Delivery:

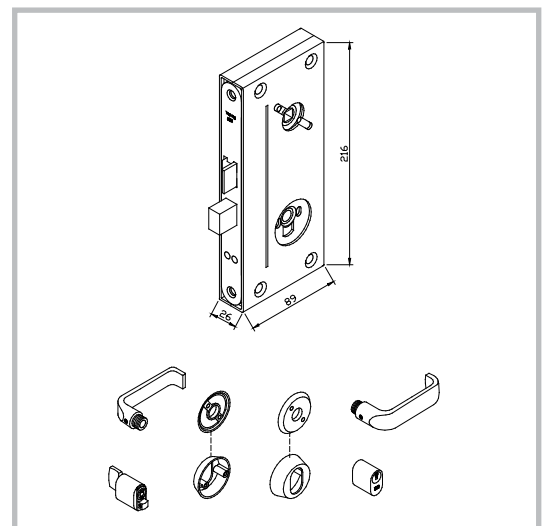
- lock case and external lock casing
- cylinder fastening screws
- 4 machine screws 6 x 35 mm
- striker plate is optional
- accessories must be ordered separately

Spare Parts:

- 5390 external casing for Lock case 5312/8
Part #: 4822561



Lock case 5312/8/5390



Lock case with available accessories



Lock case 5316/8 - Cylinder Lock case

TO ORDER you must specify:

- lock case number
- direction of opening, i.e. right or left
- single pack or industrial pack of 20 pcs

Application:

- meets all fire class requirements
- suitable for corrosive environments
- suitable for heavy exterior and interior doors
- reinforced latch bolt
- dead bolt

Operation:

- reinforced latch bolt operated by handles
- dead bolt operated by key or thumb turn
- double cylinder can be fitted

Materials and Finish:

- lock case - stainless steel
- striker plate - stainless steel
- handle hub and latch bolt - stainless steel
- 8 mm handle hub
- weighs 602 g

Delivery:

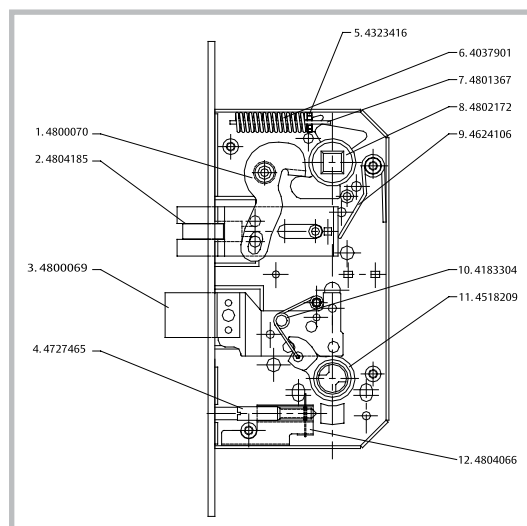
- lock case only
- striker plate is optional
- accessories must be ordered separately

Spare Parts:

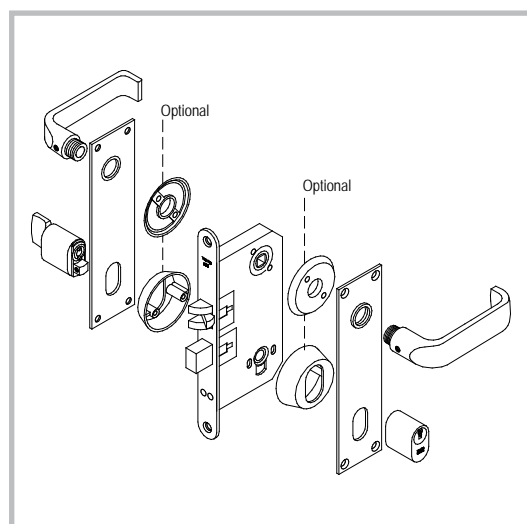
1. Latch bolt retracting arm
2. Latch bolt
3. Dead bolt
4. Cylinder fixing screw
5. Pin spring
6. Handle hub spring
7. Spring guide
8. Handle hub 8 mm
9. Latch bolt spring
10. Cylinder hub spring
11. Cylinder hub
12. Screw guide



Lock case 5316/8



Exploded view of available spare parts



Lock case with available accessories

Lock case 5316/8 - Bathroom Door Lock case



TO ORDER you must specify:

- lock case number
- direction of opening, i.e. right or left
- single pack or industrial pack of 20 pcs

Application:

- meets all fire class requirements
- for toilet and bathroom doors
- suitable for corrosive environments
- antifriction latch
- dead bolt
- used with long escutcheon 7718 or handle rose 7509 and indicator rose 7562

Operation:

- antifriction latch operated by handles
- dead bolt operated by thumb turn
- antifriction latch bolt prevents vibrating

Materials and Finish:

- lock case - stainless steel
- striker plate - stainless steel
- handle hub and latch bolt - stainless steel
- 8 mm handle hub
- weighs 596 g

Delivery:

- lock case only
- striker plate is optional
- accessories must be ordered separately

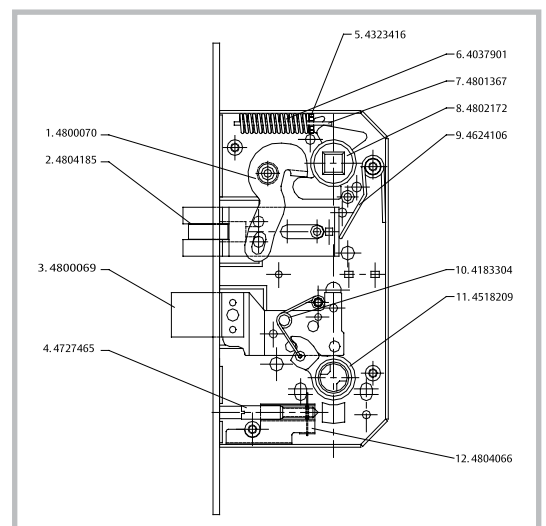
Spare Parts:

1. Latch bolt retracting arm
2. Latch bolt R/L
3. Dead bolt
4. Cylinder fixing screw
5. Pin spring
6. Handle hub spring
7. Spring guide
8. Handle hub 8 mm
9. Latch bolt spring
10. Cylinder hub spring
11. Cylinder hub
12. Screw guide

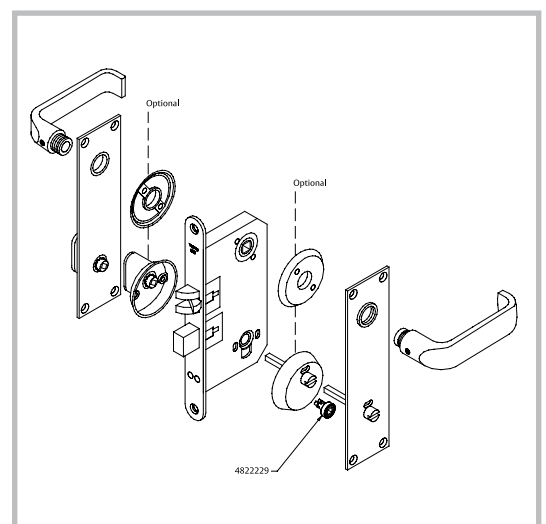
NB: red adaptor, set of 10 pcs, available on request.
Item # 4822229



Lock case 5316/8



Exploded view of available spare parts



Lock case with available accessories

Lock case 5320/8 - Cylinder Lock case with 20 mm Latch Bolt



TO ORDER you must specify:

- lock case number
- direction of opening, i.e. right or left
- single pack or industrial pack of 20 pcs

Application:

- meets all fire class requirements
- suitable for corrosive environments
- suitable for heavy exterior and interior doors
- reinforced 20 mm latch bolt to meet USCG standards
- dead bolt

Operation:

- reinforced spring loaded latch bolt operated by handles
- dead bolt operated by key or thumb turn
- double cylinder can be fitted
- standard drilling in door frame without centre partition to accommodate both the spring loaded latch bolt and dead bolt

Materials and Finish:

- lock case - stainless steel
- handle hub and latch bolt - stainless steel
- 8 mm handle hub
- weighs 602 g

Delivery:

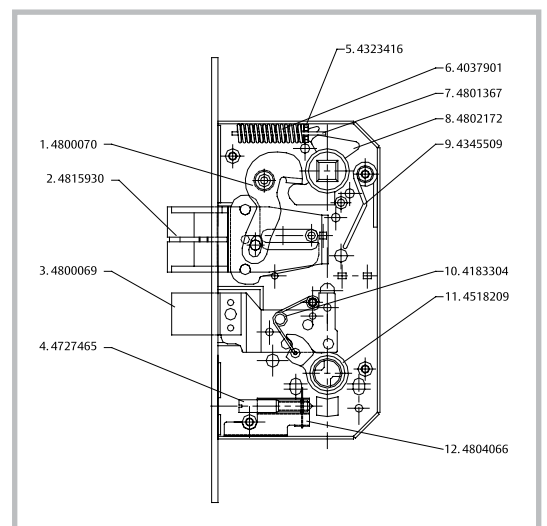
- lock case only
- striker plate must be specially ordered - the standard 53-Series striker plate cannot be used
- accessories must be ordered separately

Spare Parts:

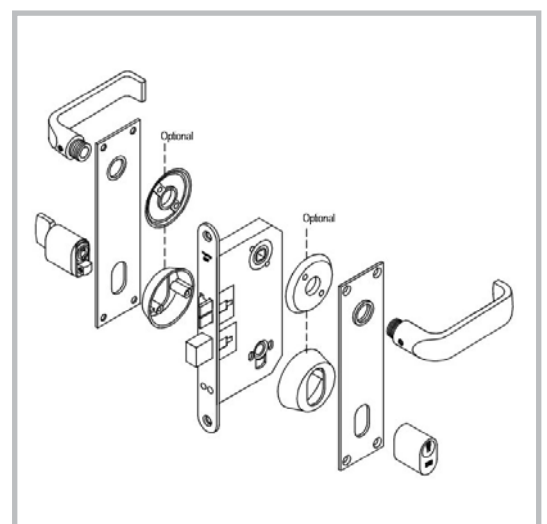
1. Latch bolt retracting arm
2. Latch bolt
3. Dead bolt
4. Cylinder fixing screw
5. Pin spring
6. Handle hub spring
7. Spring guide
8. Handle hub 8 mm
9. Latch bolt spring
10. Cylinder hub spring
11. Cylinder hub
12. Screw guide



Lock case 5320/8



Exploded view of available spare parts



Lock case with available accessories

Lock case 5322/8 - Double Latch Lock case



TO ORDER you must specify:

- lock case number
- direction of opening, i.e. right or left
- single pack or industrial pack of 20 pcs

Application:

- meets all fire class requirements
- for doors where automatic dead latching is important
- very suitable for emergency exits
- recommended in combination with door closer and electric striker plate

Operation:

- double antifriction latch with dead latch
- operated by key or thumb turn
- double cylinder can be fitted

Materials and Finish:

- lock case - stainless steel
- 8 mm handle hub
- weighs 610 g

Delivery:

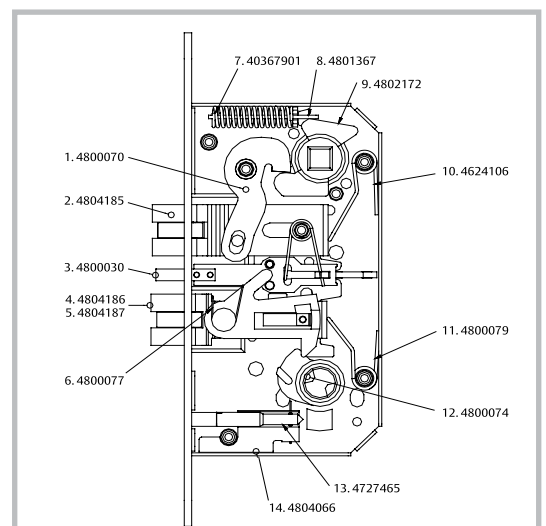
- lock case only
- accessories must be ordered separately

Spare Parts:

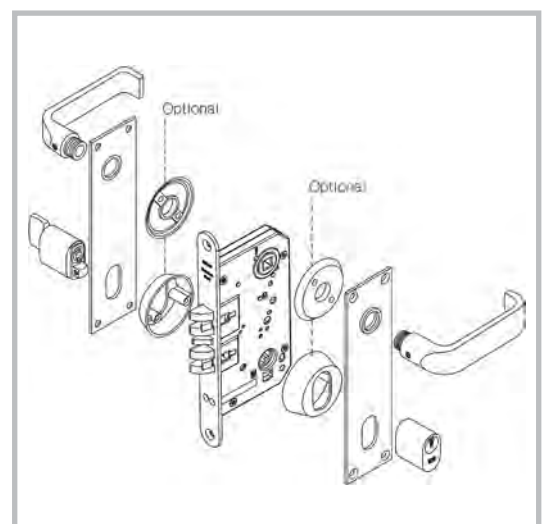
1. Latch bolt retracting arm
2. Latch bolt R/L
3. Latch guard
4. Latch bolt R
5. Latch bolt L
6. Latch handle spring
7. Handle hub spring
8. Spring guide
9. Handle hub 8 mm
10. Latch bolt spring
11. Dead latch spring
12. Cylinder hub
13. Cylinder fixing screw
14. Screw guide



Lock case 5322/8



Exploded view of available spare parts



Lock case with available accessories

Lock case 5332/8 - Dead Latch Lock case



TO ORDER you must specify:

- lock case number
- direction of opening, i.e. right or left
- single pack or industrial pack of 20 pcs

Application:

- meets all fire class requirements
- suitable for corrosive environments
- automatic dead latching
- recommended in combination with door closer and electric striker plate

Operation:

- dead bolt operated by key or thumb turn
- double cylinder can be fitted

Materials and Finish:

- lock case - stainless steel
- striker plate - stainless steel
- weighs 469 g

Delivery:

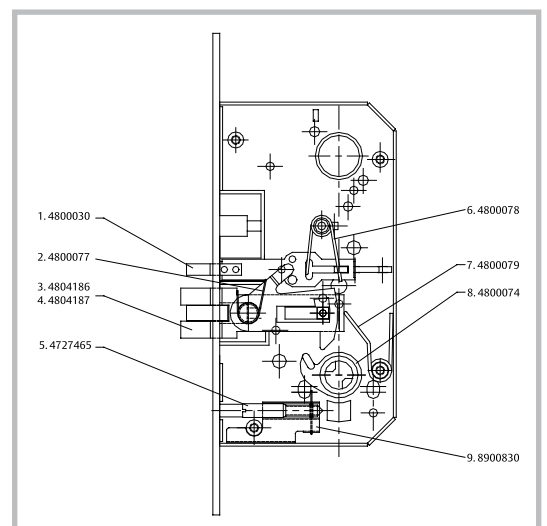
- lock case only
- striker plate is optional
- accessories must be ordered separately

Spare Parts:

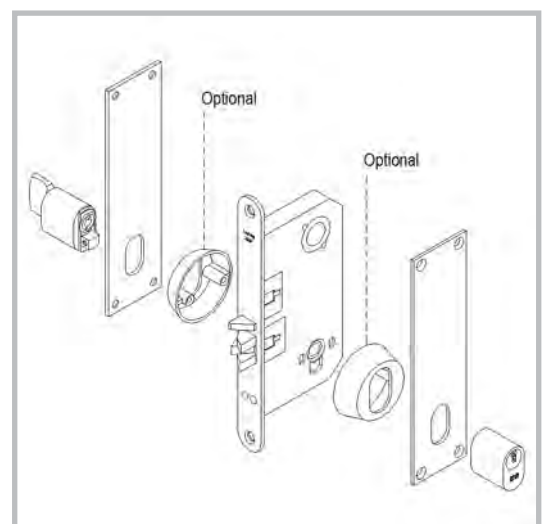
1. Latch guard
2. Latch handle spring
3. Latch bolt R
4. Latch bolt L
5. Cylinder fixing screw
6. Latch guard spring
7. Dead latch spring
8. Cylinder hub
9. Screw guide



Lock case 5332/8



Exploded view of available spare parts



Lock case with available accessories

Lock case 5336/8 - Latch Lock case



TO ORDER you must specify:

- lock case number
- direction of opening, i.e. right or left
- single pack or industrial pack of 20 pcs

Application:

- meets all fire class requirements
- suitable for corrosive environments
- antifriction latch
- no locking mechanism

Operation:

- operated by handles
- antifriction latch bolt prevents vibrating

Materials and Finish:

- lock case - stainless steel
- striker plate - stainless steel
- handle hub and latch bolt - stainless steel
- 8 mm handle hub
- weighs 472 g

Delivery:

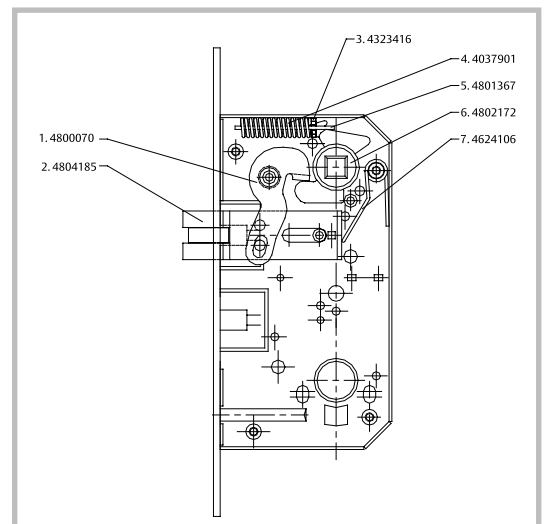
- lock case only
- striker plate is optional
- accessories must be ordered separately

Spare Parts:

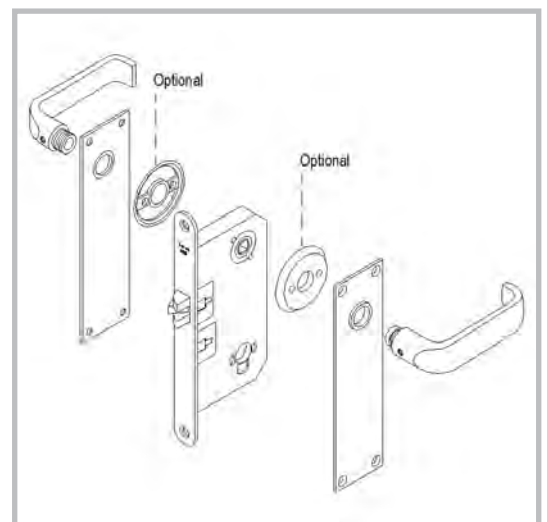
1. Latch bolt retracting arm
2. Latch bolt R/L
3. Pin spring
4. Handle hub spring
5. Spring guide
6. Handle hub 8 mm
7. Latch bolt spring



Lock case 5336/8



Exploded view of available spare parts



Lock case with available accessories

Lock case 5341/8 - Cylinder Lock case with Dead bolt



TO ORDER you must specify:

- lock case number
- single pack or industrial pack of 20 pcs

Application:

- meets all fire class requirements
- suitable for corrosive environments
- dead bolt function only

Operation:

- dead bolt operated by key or thumb turn
- double cylinder can be fitted

Materials and Finish:

- lock case - stainless steel
- striker plate - stainless steel
- weighs 467 g

Delivery:

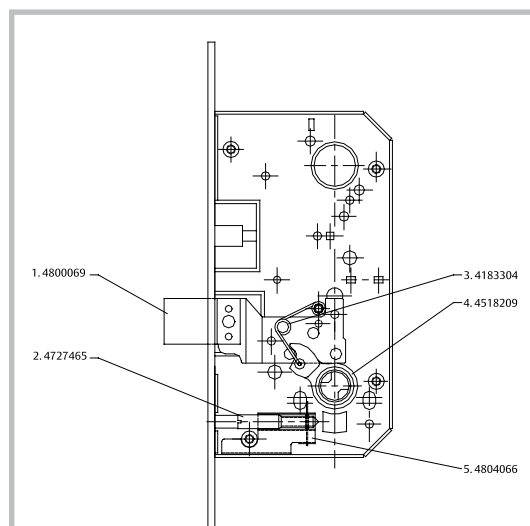
- lock case only
- striker plate is optional
- accessories must be ordered separately

Spare Parts:

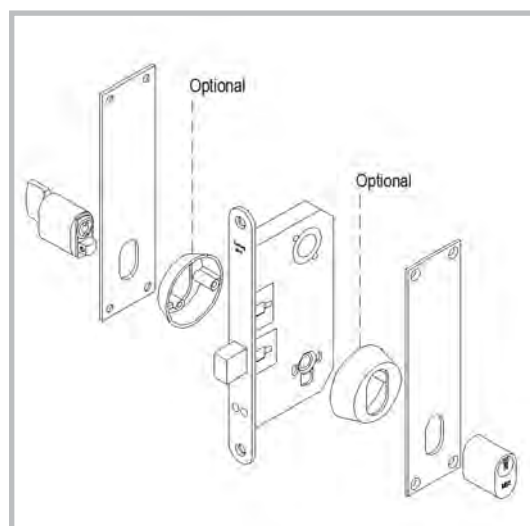
1. Dead bolt
2. Cylinder fixing screw
3. Cylinder hub spring
4. Cylinder hub
5. Screw guide



Lock case 5341/8



Exploded view of available spare parts



Lock case with available accessories

Lock case 5341/8/5390 - Surface Mounted Cylinder Lock case



TO ORDER you must specify:

- lock case number

Application:

- meets all fire class requirements
- suitable for corrosive environments
- surface mounted
- no handle function

Operation:

- dead bolt operated by key or thumb turn
- double cylinder can be fitted

Materials and Finish:

- lock case and external lock casing - stainless steel
- striker plate - stainless steel
- weighs 1.236 kg

Delivery:

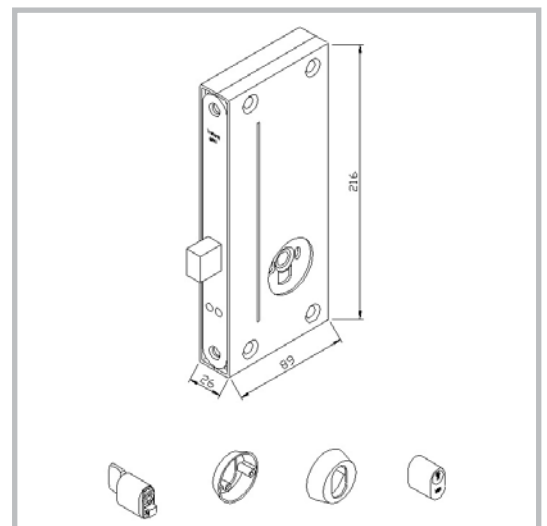
- lock case and external lock casing
- cylinder fastening screws
- 4 machine screws 6 x 35 mm
- striker plate is optional
- accessories must be ordered separately

Spare Parts:

- 5390 external casing for Lock case 5341/8
Part #: 4822562



Lock case 5341/8/5390



Lock case with available accessories

Lock case 5382/8 - Cylinder Lock case with Two Hooks



TO ORDER you must specify:

- lock case number
- single pack or industrial pack of 20 pcs

Application:

- meets all fire class requirements
- suitable for corrosive environments
- suitable for sliding doors

Operation:

- cylinder lock case with 2 hooks
- lower hook operated by key or thumb turn
- upper hook operated by handles
- double cylinder can be fitted

Materials and Finish:

- lock case - stainless steel
- striker plate - stainless steel
- latch hook and hook for lower dead bolt - stainless steel
- 8 mm handle hub
- weighs 613 g

Delivery:

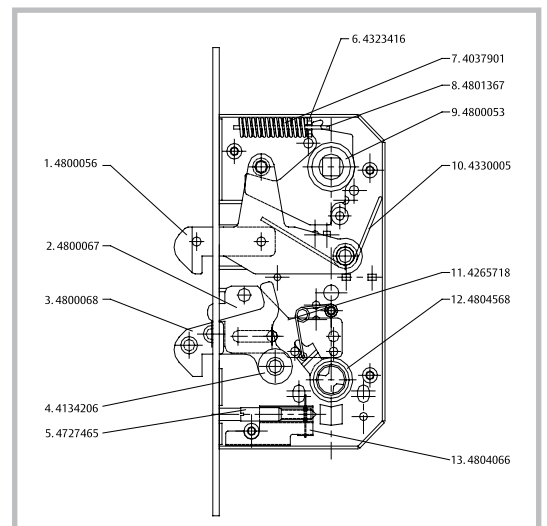
- lock case only
- striker plate is optional
- accessories must be ordered separately

Spare Parts:

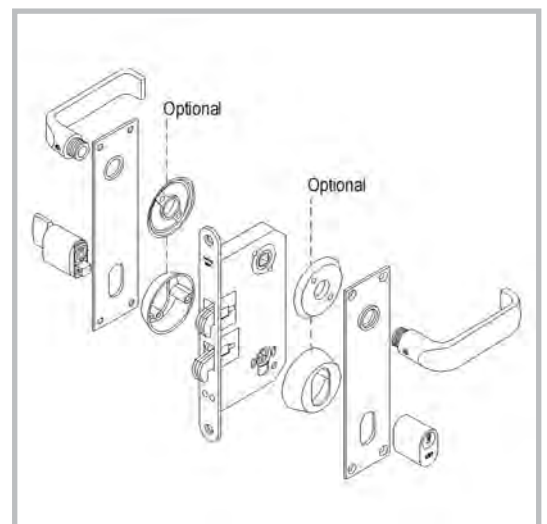
1. Latch hook
2. Lower dead bolt
3. Hook for lower dead bolt
4. Pin for lower hook
5. Cylinder fixing screw
6. Pin spring
7. Handle hub spring
8. Spring guide
9. Handle hub 8 mm
10. Spring for upper hook
11. Cylinder hub spring
12. Cylinder hub
13. Screw guide



Lock case 5382/8



Exploded view of available spare parts



Lock case with available accessories